

WE SHALL SITE THEM ON THE BEACHES

don't miss the Autumn Friends Lecture on

ANTONY GORMLEY

at the **Royal Academy**

TOTEMIC

art for all

going potty at

Aberystwyth

read our reviews of the

**Annual PSAD Summer Exhibition
Party and Prizegiving Evening**
and

putneyart 2019

come to the

PSAD Friends AGM

Saturday 16th November

Hear the news and have your say over a glass of wine before our Autumn lecture

exciting new

Autumn Workshops

details inside



GET READY FOR CHRISTMAS

all you need to know about the
Christmas Arts & Crafts Fair & School Christmas Party



SCHOOL NEWS

A very warm welcome back to our existing and all our new students. It is great to see you all at the School. I hope you had a wonderful summer break.

It was another busy year in 2018-19 with additional courses throughout the 12 months including extra weeks added to the academic year.

We ran courses for adults and young people during Easter break, extended the Summer School provision and started the academic year 2019-20 early with an Induction & Open Studio week before the start of this term.

We had record numbers of enrolment last year with the final tally at 5064, exceeding the previous year enrolment at 4800 and our target which was set at 4925. The number of individual learners at the School is now at 1810.

In addition to the success of the courses we also had plenty to celebrate including the annual end of year exhibition and prize-giving event in June. We had 228 submissions (over 50 extra entries compared to last year).

Again, the friends were very supportive in ensuring the process went smoothly, sourced the sponsorship for the 16 categories and organised the evening event which was well attended with Mayor Jane Cooper presenting the certificates and prizes to the award winners.

This academic year started earlier as mentioned above and we are again looking forward to a busy term. The annual programme will have new courses especially in the digital design and photography disciplines including;

- Project Led Photography
- Photoshop Level 2
- Digital Illustration Workshop
- Beginners Photography Workshop

The October half term programme is now available, and we have already started to enrol for the courses. We will be working on the February half term programme over the next few months and have taken recommendations from both staff and students on the type of courses to include in the programme.

As always, I would welcome further feedback from everyone towards improving the quality and range of provision at the School.

In conjunction with Wandsworth Artists Open House and the National 'Big Draw' in October, PSAD will be hosting a group of artists at the School and offering FREE drop in workshops for the local community. Last year the free workshops in pottery, printmaking and drawing were well attended by the general public with many families enjoying the range of activities. The School will be open on Sundays 6th and 13th October, with local artist exhibiting 11am-5pm, free workshops between 1-4pm and our wonderful café serving tea, coffee and cake between 11am-3pm

It is an exciting and busy term for everyone, but I look forward to seeing you all around the School. Have a great term everyone.

Nilar Morgan, Head of School

SCHOOL NEWS

STAFF NEWS

We have a no new tutors joining the PSAD teams, but I am delighted that our freelance photography tutor Roy McMahon has agreed to return to the School this year to facilitate the Advance Photoclub group. We hope that you will give him a warm formal welcome to the School.



All the staff teams were invited to 'Staff Training Day and Welcome Back Briefing' on 13th September. We had 18 staff attending the session and, after an active session, everyone enjoyed the opportunity to liaise with colleagues over the delicious lunch prepared by Antonia Reina.

OTHER NEWS

Early May Bank Holiday. PLEASE NOTE that the early May Bank Holiday in 2020 will move from Monday 4th May to Friday 8th May to mark the 75th anniversary of VE Day. This was announced in June, shortly after the annual programme was planned and published.

Due to the change above, we will be adjusting the Summer Term provision slightly and the good news is that the Monday classes will have an additional week to the term but sadly the Friday classes will have to be reduced to 11 weeks.

PSAD Outreach Work. The third phase of the community art sessions are currently being planned by Curriculum Manager, Belinda Bates. We hope to extend the community workshops to three programmes in Battersea, West Putney, and an additional offer in Roehampton.

Networking Event at PSAD. At the start of September Belinda and I attended a networking event in Putney in order to raise the profile of the School with local businesses. We hope to offer a corporate taster session in the future to allow everyone to see the wonderful work of the School and the positive contribution to the community.

EXHIBITION PROGRAMME

30th September to 19th October

- Sarah Sparkes Open Studio Class

30th September to 26th October

- Introduction to Drawing & Drawing into Watercolour and Gouache sketchbooks and studies - Shaun Carey's classes

21st October to 9th November

- Liz Elmhirst's Watercolour Classes

28th October to 9th November

- Dante Pertusini's Thursday classes - Ceramics candle sticks and egg cups

11th to 30th November

- Adele Wagstaff - Solo Portraits
- Life Drawing - Shaun Carey's Wed eve class
- Andy Urwin Solo exhibition

2nd to 14th December

- Christmas Fair artworks

PSAD TERM DATES

Autumn 2019

16th Sept - 14th Dec (H/T 21st -27th Oct)

Spring 2020

6th Jan - 5th April (H/T 17th - 23rd Feb)

Summer 2020

20th April - 18th July (H/T 26th - 31st May)

Summer School 2020

20th July - 7th Aug

FRIENDS OF PSAD NEWS

CHAIR'S MESSAGE

Another School Year has started and our 'Join the Friends' table in the entrance hall will be up and running again this year. Last year many people commented how good it was to be prompted and badgered at the beginning of the term. You are to be badgered again, thank you all for your forbearance!

Last summer term seems a long time ago but the Friends were busy right up to the end. In addition to the School Exhibition, Summer Party and Putney Art, the Friends Committee continued to put the monies we raise to good use in the School. Details of further projected expenditure will be announced at the AGM after consultations with the staff.

Now classes are in full swing it is the turn of the Friends Committee to kick start our activities for this year. This newsletter has all the information you need to join the Lecture, Workshops and Christmas Fair. But we need your help with one more unsung but crucially important event this term – it is the election of the Friends Committee members and appointment of Trustees at our AGM on 16th November.

We need enthusiastic, energetic committee members and even if you hate committees we still need you as helpers and contributors. Please put your names forward or encourage interested friends to come forward. If you want more information about what is entailed or are just willing to help, drop us an email to friendsofpsad@gmail.com.

As you all know The Friends have been deeply involved in making representations to Wandsworth Borough Council about the future structure and management of the School. Progress has been slow and painstaking, maybe inevitably, slower than we hoped. The Friends have been committed to further meetings and discussions throughout the summer. We are currently finalising a formal Business Plan to help to secure the best possible outcome for the School. We expect papers detailing the next steps to be presented to the Council's Oversight and Scrutiny Committee meeting on 20 November.

The more members we have the better we can represent you all to ensure the continued success of the School.

Thank you for all your support last year and your continued support for this year. As a Friend please pass on news of our activities to your classmates and encourage them to join up. Membership Forms are available from the office.

Clare Frankl Bertram, Chair FPSAD



jackdaw jewellery

specials made to order * alterations and repairs
pennymontagnon@gmail.com * tel: 07913851635

FRIENDS OF PSAD NEWS

TREASURERS REPORT

The Friends financial end of year is 8th September and at that point our balances were c.£5.6K with c.£14K on deposit. We have spent just short of £9.5K on items for the school this year. We are still holding back on some spending pending the resolution of the re-tendering of the Art School contract, due this year.

In the meantime, we have continued with our usual programme of events! You will see reports on all of them in this Newsletter and please do look out for some fantastic workshops and the lecture coming up. The Christmas Fair is also advertised and will take place on 8th December. We would love it if you could all come and support your colleagues and the school.

The Accounts will be available by the AGM on November 16th (also a lecture night) - and we hope that you will come. Would anyone like to be Treasurer?

Vicki Garthwaite, Treasurer FPSAD

WHO WE ARE, WHAT WE DO

The Friends of Putney School of Art & Design is a registered charity run by volunteers to support and promote the Art School. Friends membership subscriptions help to raise money to enhance the facilities in the school.

Members benefit from free lectures, and advance booking on workshops and masterclasses from visiting expert speakers and tutors. The Friends also runs exhibitions, parties and art and craft fairs, as well as representing student views to ENABLE, through whom PSAD is contracted to provide arts services to local residents for Wandsworth Council.

Membership of the Friends of PSAD is a great way to support the School and is only £10 for the whole academic year, starting in September.

FPSAD Committee Members:

Clare Frankl Bertram	Trustee	Chair
Alison Brooke	Trustee	
Vicki Garthwaite	Trustee	Vice Chair and Treasurer, Social Media
Mark Hayman	Trustee	Membership Secretary, Class Reps Co-ordinator
Jean McMeakin	Trustee	Newsletter Editor, Social Media
Carolyn McMillan	Trustee	Secretary
Yvonne Guerrier		
Nicole Hollingworth		
Penny Montagnon		
Liz Mundle		
Sniez Torbarina		
Fleur Tookey		

ANNUAL PSAD SUMMER EXHIBITION PARTY AND PRIZEGIVING EVENING



Above: by Sheila Rowe



by Penny Henkes

The Annual Student Show of the Putney School of Art and Design Summer Show was held this year from 3rd to 21st June. All students were invited to submit one of their works for the summer display which was also entered for the Summer Annual Prize comprising 16 different art categories.

The Summer Party and Prizegiving evening took place on Friday the 7th June and proved to be an exciting, enjoyable and especially well attended event, further enhanced by the presence and talent of the Jazz band led by artist Ken Cox.

Prizes were presented to each winner and runner up by Nilar Morgan, Head of School, and Jane Cooper, the Mayor of Wandsworth. They congratulated each student on behalf of everyone present.



Above: by Janet Hellier

The evening was a great opportunity to view the art on display, meet with new and old friends and colleagues, exchange thoughts - and dance moves!

The Summer Show and evening are organised jointly by the School and The Friends of School. As well as being a wonderful showcase of the creative and inspiring artworks which the students have created during the whole academic year, the exhibition contributes to promoting Putney School of Art and Design as a centre for adult and community learning.

Review by: Sniez Tobarina

ANNUAL PSAD SUMMER EXHIBITION PARTY AND PRIZEGIVING EVENING

Prize-winners:

Category

Ceramic Sculpture
Pottery Hand-building
Pottery Throwing
Pottery Throwing - Elizabeth Bull prize
7-13 Years
Oil or Acrylic Painting
Life Drawing (Drawing or Painting)
Digital Photography & Digital Design
Mixed Media
Screenprinting
Etching
Pastels
Lithography / Lino / Experimental Print
Portrait (Drawing or Painting)
Illustration/Drawing / Botanical
Watercolour / Gouache Painting

Title of work

Waiting
Cactus Pot
Coffee Pot
SAP
Sidewalk Watercolour Study
Canoe Adventurer
Jackie
Kingley Street
Crushed Bottles
Apples
A.P. Iceland The South
Brexit ... Continued
Bathers
Amanda
Untitled (Alps)
Wishing & Waiting

Winner

Gillian Brett
Mary Newstead
Ann Hughes
Sabine Buckley
Calder Tillinghast
John Sawyer
Vasant Tanavde
Tim Bush
Sheila Roe
Penny Henkes
Rosanna Williams
Janey Chesterton
Madeleine Whitney
Janet Hillier
Lucy Brett
Charlotte Bulman



Above: by Lucy Brett



by Sabine Buckley (Elizabeth Bull prize)

ANNUAL PSAD SUMMER EXHIBITION PARTY AND PRIZEGIVING EVENING

Some of our wonderful prize winners and runners up being presented with their prizes by the Mayor Jane Cooper.



putneyart 2019

Putney Art Exhibition | Putney Exchange | June 2019

Having exhibited but never before being involved with setting up the show at Putney Exchange I was impressed by how streamlined was the process.

One team unloaded everything into the cargo area. Then it was all hands on deck, as great metal cages laden with precious works of art had to be pushed into the lifts and steered into place. Checks were made that no one got locked in and nothing was left behind in the cavernous basements reminiscent of an Edgar Allan Poe setting.

Meanwhile, stands were magically erected outside Waitrose and paintings unwrapped and lined up for the hanging team to put into some sort of order. Likewise, the three-dimensional objects and, unbelievably, in a couple of hours it was all done, and looked amazing. The show opened on Monday morning, and people began to stop by and admire, or chat or buy.



It has similarities to the Royal Academy Summer Show, except that in recent years there has been no selection process. Many artists always exhibit and people like to see new work by the familiar names, but also enjoy discovering new and sometimes challenging talent. A huge range of work is shown, from the competently representational, excitingly abstract, to the quirky... especially evident in the ceramics this year.

It seems that sales have been slower in the last few years and I wonder if it is time to reintroduce some form of selection; it would take more effort, and probably lead to arguments within the committee, but might possibly produce a more coherent display, albeit it a less egalitarian one.

The bottom line is that it is not only a fundraising exercise for the Friends of PSAD but a promotional event for the School and it is important to present a high standard of work.



It is also a popular event with the local community but involves a lot of hard work and commitment, especially this year from Mark Hayman who was an absolute legend holding it all together, sorting cash issues and making sure the team and the artists were all kept happy.

The event raised about £1500 for the Friends and many artists were rewarded with a number of sales.

Review by: Fleur Tookey

FRIENDS OF PSAD NEWS - GOING DIGITAL

Like many other publications, The Friends of Putney School of Art & Design Newsletter is moving from print to digital editions of newsletters, to save time and costs, and to make our communications to you, our members, quicker and easier.

We are phasing out printing and posting hard copies of this newsletter to members and we are encouraging all members to subscribe to the digital version of the newsletter now.

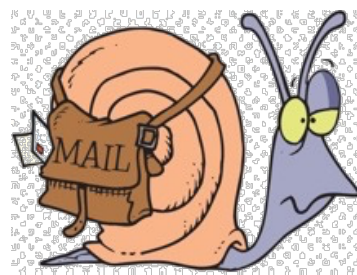
We know some members like receiving a hard copy and some keep back issues, but most old print copies are thrown away or go in the recycling bin once read. Posting hard copies of the newsletter and other correspondence to members three times a year costs nearly half of the membership subscription each year. The majority of current members now subscribe to e-news.



Subscribing is easy, all you need to do is give us your e-mail address and we'll do the rest.

We'll send you an e-mail each term with the newsletter ready to download, and from time to time we'll send other e-mails with news and information about events, activities, lectures, and workshops.

E-subscribers get their copy of the newsletter as soon as it's published - before the printed copies are sent, so no more waiting for the post to arrive.



FPSAD Trustees and Committee members are all volunteers and give up their time to run the Friends and all the membership activities and events, including getting the newsletter printed, addressing, stamping and stuffing nearly 200 envelopes with it, and taking them to the post, every term. Signing up to e-news helps us save time and the costs of printing, packaging and postage, and of course saves trees.

If you're currently receiving this newsletter in paper form through the post, please sign up to e-news today. Just e-mail us now: **friendsofpsad@gmail.com**. If you're already an e-subscriber, please accept our sincere thanks.

For those members who don't have access to a computer, or where digital accessibility is a problem, we will continue to send hard copies on request.

CLASS/STUDENT REPS

Those of you who were Class Reps last academic year and are doing the same course and are happy to continue to represent your classmates again this term/year - thank you.

If your class hasn't got a rep and you are willing to take on the task please let your tutor (and me **mhhayman@gmail.com**) know. If you haven't got a rep, don't want to do it but know someone who may like to take on the job please encourage them.

However as I have said before there is nothing to it - forwarding the odd email from the Friends or the school. A doddle!

Mark Hayman, Class Reps Co-ordinator

MEMBERSHIP NEWS

Hello Friends. Hopefully by the time you are reading this you have met the strange man in the bowler hat or one of the other members of the Friends committee who have been enrolling and re-enrolling members at the School reception for the last two weeks. Those of you who have signed up for the first time - thank you for joining the Friends and please take part in the events we run. Those joining us again, we are grateful for your continuing support.

And now with the niceties over I want to come to those of you reading this who haven't signed up again. Those of you who rushed by the sign-up table saying "I'm in a hurry, I'll do it later" or "I haven't got any money on me" or "I will think about it".

What the . . . *#\$^*¥!! Come on, we need you, your wonderful Art School desperately needs you. In fact your country needs you - perhaps art can help us through the stressful times we are living through. OK, OK perhaps that's taking it a bit too far but honestly PSAD needs Friends.

100% of the money we raise goes back into the Art School. Some of the things we (you) paid for last year include: new lighting in Studio 2, televisions for studios, boards for painters and screens for Studio 1.

And what does it cost to be a Friend of PSAD for 12 months? Wait for it, prepare yourself as this might come as a bit of a shock. It's still only £10. What? How can that be? It's madness. Are we back in the eighties? How do you do it?

Well you are right it is bonkers, especially in a world where a cup of Yemeni coffee at Le Cafe Alain Ducasse, Coal Drops Yard, Kings Cross will set you back £15.

But although difficult to believe it's true, for only £10 a year you get world class lectures, newsletters, priority booking for FPSAD organised workshops, parties, fairs and last but by no means least a warm, warm feeling deep inside of you which comes from knowing you are providing vital support to one of the best and most precious art schools in London.

And how do we do it - not raise the cost of membership? Well we work very hard at raising money in other ways, being more efficient, doing things in-house asking for more for voluntary help from Friends and committee members. But it's tough and your £10 is very important to us.

After reading that I know you have been moved, possibly to tears. But what can you do to join up now the man in the bowler has gone from reception? Well it's never too late to sign up - complete an application form pop it in an envelope with your £10 and put it in the white Friends box by the front entrance.

Alternatively get in touch with me (FAO Mark friendsofpsad@gmail.com) and I can sort it out. Once I receive your membership form and payment you'll receive a membership card in the post.

If you have already signed up (thank you again) but there's more you can do - and that is try to sign up a new member. Imagine it, if every member helped sign up a new member think what it would do to our numbers and what it would do for the school. Wow!

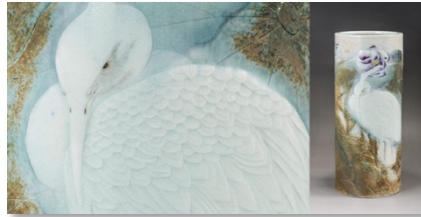
Mark Hayman, FPSAD Membership Secretary



THE INTERNATIONAL CERAMICS FESTIVAL

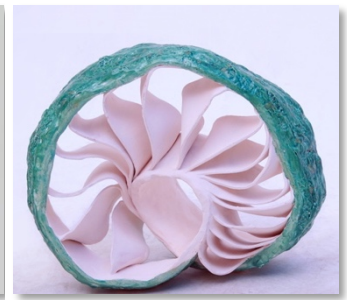
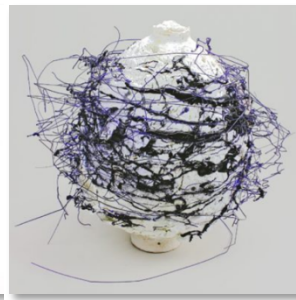
Aberystwyth - July 2019

Like a flock of birds, thirty potters from Putney set off to make the long pilgrimage to the International Ceramic Festival which is held at Aberystwyth University every two years. For some it was a first visit and for others a well-travelled and much enjoyed path.



The Festival showcases many aspects of ceramics and is attended by eight hundred people from around the world.

Demonstrations are given by notable professionals, two at a time on a main stage throughout the weekend. This year there were potters from China, Uzbekistan, Japan, USA, and Europe.



The atmosphere is buzzing with shared ideas and friendship. The highlight, literally, of the weekend is the firing of pots in many different kilns.

As it gets dark on Saturday night, against the backdrop of the Welsh sea, flames rise into the night and the alchemy of turning clay into ceramic is enjoyed by the assembled enthusiasts.

Not even staying in student rooms or a six and a half hour journey can diminish the pleasure of the Festival. Returning home with new ideas, new tools and firmly cemented friendships with colleagues from Putney make it an event not to be missed.

Review by: Jenny Kershaw



FRIENDS EVENTS: AUTUMN WORKSHOPS

friends of
**Putney
School
of Art &
Design**

SUNDAY WORKSHOPS

3 November 2019 10–4 pm at PSAD

Simon Burder www.oaksfineart.co.uk

KITCHEN LITHO

Discover the magic of lithography through the simplified process of Kitchen Litho, working directly on aluminium foil with readily available drawing materials including marker pens and colouring pencils and etching the foil with cola. This rapid, non-toxic process is also perfect for printmaking at home – in the kitchen of course!

£55 A list of materials will be sent to you when you have booked and paid



Freya Pocklington www.freyapocklington.com

EXPERIMENTAL DRAWING WITH INK AND PASTEL

Learn about the exciting possibilities of drawing with Winsor and Newton ink and Conté hard pastel. You will combine a range of techniques to create an artist book and series of experimental drawings. We will be using a stimulating still life setup, images from magazines and the architecture of the studio space. The course aims to build your confidence in combining materials and trialling new processes..

£55 A list of materials will be sent to you when you have booked and paid.
ONLY Windsor and Newton inks can be used in this workshop

Sophie MacCarthy www.sophiemacCarthyceramics.co.uk

SLIP PAINTING WORKSHOP

The day will begin with a demonstration of Sophie's technique of painting with thin slips on to the dry clay surface and employing paper cut-outs and wax resist to create patterns and designs. Students will then spend some time making stencils or paper cut-outs using their own ideas and drawings or using reference books or magazines to make tracings of imagery and motifs – these can be figurative or abstract.

In the afternoon, students will continue the decorating processes on their pieces* which can be a tile or a plate or shallow dish, thrown or press moulded.

£65 Includes clay, slips and wax resist. A list of other materials will be sent to you after you have booked and paid.

* Students MUST make tiles/plates before workshop as clay needs to be 'bone dry' before decorating.



PRICE INCLUDES LUNCH, TEA AND COFFEE

**PRIORITY BOOKING FOR FRIENDS OF PSAD OPENS AT 10.00 ON MONDAY
7TH OCTOBER AND CLOSSES ON SATURDAY 12TH OCTOBER.
BOOKING FOR NON MEMBERS OPENS AT 10.00 ON MONDAY 14TH OCTOBER.
If a course is overbooked at the end of priority booking, places will be allocated by ballot.**

FRIENDS ANNUAL GENERAL MEETING

FORMAL NOTICE

THE FRIENDS OF PUTNEY SCHOOL OF ART & DESIGN • ANNUAL GENERAL MEETING
SATURDAY 16TH NOVEMBER 2019 • 6.15PM • STUDIO 2 • PUTNEY SCHOOL OF ART

We encourage all Friends members to come along to the next AGM, conveniently taking place just before the Autumn Lecture.

The AGM is an opportunity to hear about how the Friends have performed in the last year and our future plans, and a chance to ask questions and share your views. It is important that the Committee hears and understands students' concerns and opinions, so that we can best represent the student voice.

We are looking for new committee members to join us.

Do you love the School? Want to learn more about how things are run, and help shape the future? Can you share your energy, enthusiasm, ideas, and ability to get things done? Yes? We want to hear from you!

The Friends Committee is active in many areas in support of the school and the students. The Committee meets once or twice each term, and our meetings are action-focused, so you can really make a difference. If you can offer time and expertise in any area, contact us to find out more.

If you are keen to be involved, chat to a Committee member or get in touch via friendsofpsad@gmail.com, then remember to fill in a nomination form, available by e-mail or from the School Office. All forms should be returned by **Saturday 9th November**.

Friends lectures are free to members. Our next lecture by Graham Greenfield follows the AGM at 7.30pm. He will speak about the **Anthony Gormley** sculpture exhibition at the **Royal Academy**.

Why not arrive a bit early for the lecture and come to the AGM with a complementary glass of wine in hand and help make your School an even better place?

We look forward to seeing you there.

Clare Frankl Bertram, Chair FPSAD

FRIENDS OF PSAD EVENTS

Annual General Meeting

Saturday 16th November - 6.15pm

Autumn Lecture

Saturday 17th November - 7.30pm

Autumn Workshops

Sunday 3rd November - 10.00am-4.00pm

School Christmas Party

Saturday 7th December - 6.30-9.30pm

Christmas Arts & Crafts Fair

Sunday 8th December - 10am-5pm

FRIENDS EVENTS: AUTUMN LECTURE

Saturday 16 November

at Putney School of Art and Design

7pm for drinks. Talk begins 7.30

AGM 6.15 – 6.45pm in Studio 2

ANTONY GORMLEY AT THE ROYAL ACADEMY

A talk by Graham Greenfield

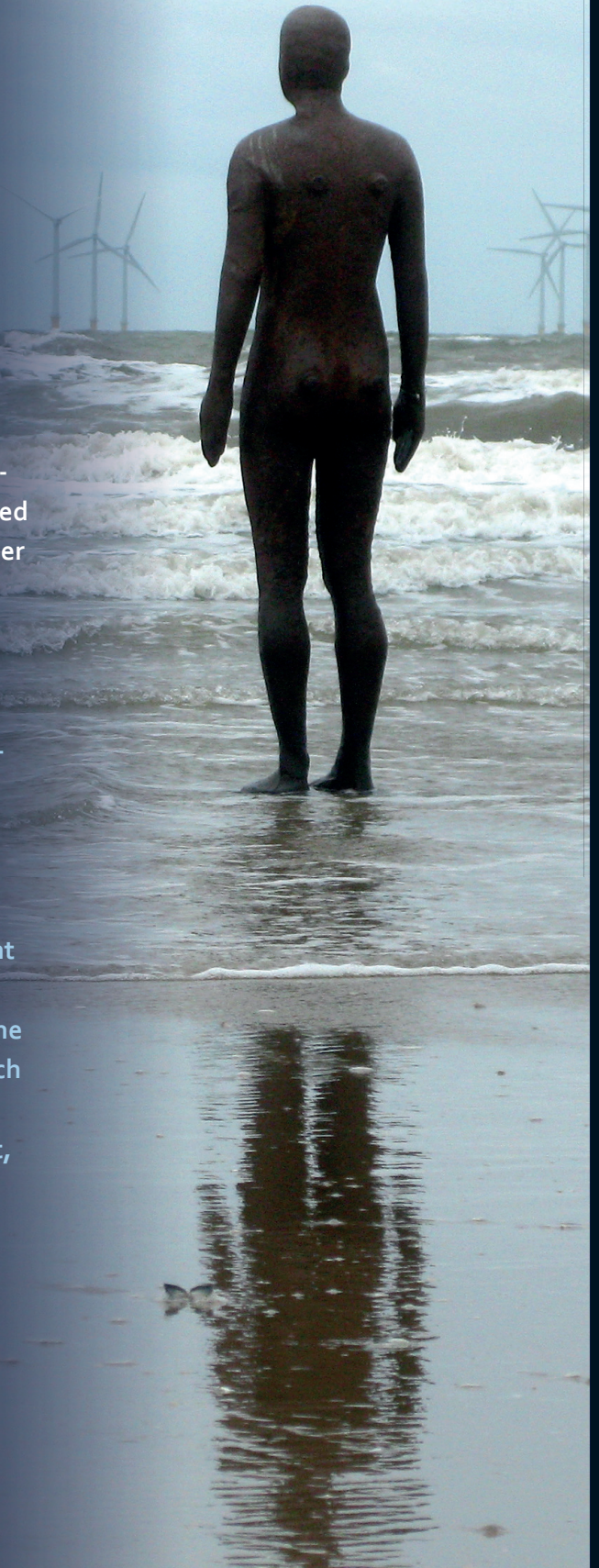
From the British coastline to the rooftops of Manhattan, Antony Gormley's sculptures are recognised across the world. With work from his 45 year career alongside major new installations created for the galleries this exhibition is his most ambitious in more than ten years (more details later)

Graham Greenfield grew up with art and architecture and started by studying architecture before changing to Fine Art. He has worked in all media in painting and printmaking, and also worked in glass, ceramics, mural design, sculpture and illustration. He has works in Tate, the Government Collection, regional museums and corporate collections. Graham has traveled extensively in the Middle-East and central Asia as part of his research and passion for ancient histories and Islamic art. He has lectured at Tate, Courtauld Institute of Art, the V&A, Dulwich Picture Gallery and on almost every exhibition at the RA since 1994.

friends of
**Putney
School
of Art &
Design**

All members welcome.

First come first served.



IN FOCUS: THE SEED POD TOTEM POLES PROJECT

I am delighted to be writing an update about the St George's hospital project. When I first contacted the hospital, over two years ago, volunteering to improve the space outside the General Intensive Care Unit, I think I imagined two or three standing pieces among the plants. Just something to distract the visitors, while they waited for news of loved ones in the waiting room. I wanted to improve the working environment for the staff, and to make them feel valued by their community.

The last two years has seen numerous meetings, and I've have had a new insight into the complex management of projects at the hospital.

The materials for the garden were funded by the charity Molly's Smile. Molly's Smile Fund was set up in memory of Molly Burdett, who died aged 19 of hemophagocytic lymphohistiocytosis, a rare blood immune disorder. Molly spent 44 days in the GICU, and Molly's mum Jane Burdett has worked tirelessly to improve the GICU for three years. It has been a pleasure to collaborate with her.



Before the transformation



Ready for installation

The combined results of Jane's garden with our totem poles is far more impressive than I could ever have imagined. A total of 11 totem poles are surrounded by a lush green background, a vinyl transfer on the windows, depicting rainforest plants. Tropical plants add fresh colour and geometric shapes and surround the totems, as if they had all grown up organically. The space feels light, and full of energy. An extraordinary improvement from the mossy tarmac view that was there when my mother was in GICU 3 years ago.

It took a full day for a team of five of us (Delyth Jones, Sharon Patel, Kate Mazur, and Satu Macdonald) from the Wednesday morning ceramics class to assemble the ceramics. We had help from the Capital Projects Manager, Rachel Gerdes-Hansen and my husband Craig Lough. Each totem pole has a heavy (25kg) solid iron parasol base and each pole was over six foot long, and had to be hacksawed to size, with the individual pods then threaded into place. Most time was spent on design.



Work begins

We had attempted to organise the order of the pods as totem poles a few months earlier, but when it came to placing them in the garden we found more alterations were needed.

IN FOCUS: THE SEED POD TOTEM POLES PROJECT



Assembly stage



Each piece had to relate to its neighbour; each totem pole has its own character, as if little beings had sprung up from the garden. Once sorted the pieces were stabilised with twine, putty and bits of pipe cladding.



Pods in place

The pods were inspired, and I hope the other ceramicists agree, we all pushed ourselves, creatively, as the project developed.

I am so grateful to those who came, at short notice, to stand in the rain, as we found the best progression for this collaborative work. James Sinclair, a photographer also from PSAD, kindly attended, to capture the moment.

IN FOCUS: THE SEED POD TOTEM POLES PROJECT

During the installation, medical staff would occasionally pop their heads round the entrance to the roof garden and exclaim at what an incredible change was taking place, how interesting and unusual were the pieces and what a positive change we were making. It was really hard work, but totally worth it.



Job done!

However, it's not quite finished. For reasons outside of our control, the heavy bases were positioned too close to the windows of the ICU, rather than the visitors room.

We were unable to move them at the time, but I now have access to reposition them again, so the view from the visitors room becomes the main focus, as I intended.

If you'd like to visit the garden there is a great viewing area from the staircase going up to the first floor of the St James's wing. There will be a launch party, and those who contributed work are all invited.

I am so grateful for the amazing support of everyone, including the management of PSAD who funded the clay and firing for the entire project, and encouraged us all at every step. It's been quite an adventure with a valuable result, of which we can all be very proud.

Report by: Miranda Duffy

SAVE THE DATE!

PSAD CHRISTMAS PARTY

SATURDAY 7TH DECEMBER 2019 * 6.30-9.30PM

ALL STUDENTS AND TUTORS WELCOME !

*** FESTIVE FOOD & DRINK * LIVE MUSIC * DIPLOMA AWARDS CEREMONY *
* ARTS & CRAFTS FAIR PRIVATE PREVIEW ***

FRIENDS CHRISTMAS FAIR POSTCARDS

At this year's Christmas Fair we'll be running the Original Art Postcard stand again.

It's where we sell postcard-size works of art donated by students and tutors. They cost £3 if you are happy to get a randomly selected postcard or £5 if there's a specific one you fancy.

We provide the cards - pick one up at reception, they'll be on the white Friends box. But you can use/make your own cards just make sure they are the right size (approx. 15cm by 11cm / 4ins by 6ins).



Make sure you use thick and robust paper or card. Pop your cards (yes you are welcome to do more than one) back into the white Friends box when completed.

The important thing to remember is that they need to be original - no prints, multiples, or photos please.



Some people are reluctant to take part - worrying that they are not skilled enough. Well that's rubbish - your work is a lot better than you think, and besides you don't have to sign it.

I mean, have you ever been to the Summer Exhibition? A common comment is, "I could do that". You are right (and you could probably do better). So here's your chance, have a go, what have you got to lose?

Watercolour, oil, collage, pencil, mixed media, something cut from your sketchbook, a design for some ceramics you are working on - anything as long as it's original. Think of the buzz you'll get when your work has been sold!

Last year Norman Ackroyd RA signed postcards and a book helped us boost sales and raise over £600. Please donate your original art postcards and help us do it again. All money goes back to PSAD.

Thanks.

Mark Hayman, Postcard Meister



Friends of Putney School of Art & Design

Arts & Crafts Christmas Fair

Sunday 8th December

10AM - 5PM



Over 30 Stalls

Original Prints

Paintings

Handicrafts

Jewellery

Art Books

Ceramics

Art Postcards

Gifts

Raffle

Pottery throwing demos

**Free Craft Sessions
for children & families**

Welcoming Coffee Bar

Food & Drinks All Day

Free Entry



Putney School of Art & Design
Oxford Road, SW15 2LQ