



NEWSLETTER

SUMMER 2019 • ISSUE 54

Get ready for the
**PSAD Summer Show
Party & Prizegiving**
on 7th June

**Spring Lecture &
Workshops**
reviews inside

Future of the School
latest update

all about

putney**art** 2019

PLUS

all the latest PSAD news



SCHOOL NEWS

I hope you all had a lovely break over the Easter weeks.

We had a wonderful Spring term with record levels of enrolment and the Easter courses were a great success with numbers particularly strong for Family Learning and Kids Art & Pottery courses. There was also a demand for Open Studios, and listening to the feedback from our students over the past few months, the May half term programme is now available with a range of new and regular provision including:

- Drawing the Figure with Musicians
- Intensive Throwing
- Lino Printing
- Open Studio Painting
- Kids Art Club
- Creative Collage: Inspired by Landscape
- Drawing & Sketching Animals with Tim Pond
- Good Artists Copy ...

We welcome further feedback and I hope that, where possible, we have implemented some of your suggestions and recommendations.

The support staff teams have been very proactive during the academic year.

Their efforts to maximise enrolment, especially for the additional Easter programme, together with the flexibility in providing courses at short notice, have resulted in a significant increase to the overall performance of the School compared to previous years.

After three years of not drawing down additional funding or grants, the School is now in a very strong position to operate on its own accord.

We have another busy term as always and in addition to putting together the course guide for next year and the Summer School programme, we also have the Summer Exhibition and Party to plan.

The Friends of PSAD continue to be supportive of the School activities and events, and in fact they will be co-ordinating the sponsorship of the prizes, the private view and the party taking place on the 7th June.

We hope that all of you will be able to join us for the evening celebration of your achievements and the collaborative partnership between everyone which is unique to PSAD.

KEY DATES THIS TERM

Priority Enrolment:	Pink slip Process In person & queue Telephone	17th – 22nd June 24th – 29th June 1st and 2nd July ONLY
Open Enrolment:	Online, queue and phone	3rd July from 10am
Locker rebooking:	Priority Open	5th and 6th June 7th June

SCHOOL NEWS

OTHER NEWS

Summer School:

Programme available from 10th June with additional days added in August.

Offsite Courses:

We are exploring external provision and have developed a four week course with tutor Shaun Carey. The course 'Expressive Drawing Course in Battersea Park' will start on Monday 13th May. If popular we will, of course, be running further classes.

PSAD Outreach Work:

The second phase of the community art sessions are planned for w/c 13th May and again the programme will run for eight weeks, funded by Enable Leisure & Culture.

Recently we were able to promote the positive work of the School through the current exhibition in the café. The work by one of the students at the school generated interest from a wide range of visitors including students and staff from West London College.

Ceramic Totem Project:

The team working on this wonderful project is currently liaising with St. George's Hospital on a date for installation.

STAFF NEWS

Rowena-Marie Manuel, our newest staff member, who is supporting the office on Tuesdays and Fridays will also be working additional days to support with updates on Web Enrol and streamlining the e-media. She is currently being trained by Rob Kenyon on the School management information system and we hope that in due course she will be able to regularly monitor the information on the various sites.

Antonia Reina is currently covering the office on Monday evenings and Saturdays until we find a replacement for Valeria Vasileva, who is now employed in a full-time role. We wish her well for the future.

EXHIBITION PROGRAMME

3rd to 23rd June

PSAD Summer Exhibition

24th June to 7th July

Diploma Year 1 Exhibition

8th to 21st July

Diploma Year 2 Exhibition

22nd July to 11th August

Tim Pond Solo Exhibition: Animal Paintings

Justine Ellis's Monday am/pm and
Wednesday am Screen-printing Class

Adriana Swierszczek Solo Exhibition

Shaun Carey's Kids Summer School

It is an exciting and busy term for everyone, but I look forward to seeing you all at the summer party but also around the school.

Nilar Morgan, Head of School

FRIENDS OF PSAD NEWS

CHAIR'S MESSAGE

Appealing for help seems to be a permanent part of my job as Chair of the Friends. First, I wrote to everyone about the future of the School, followed by writing to potential sponsors for our summer exhibitions and now I am going to ask for if there is anyone out there who would be willing to help running our events. A bit of your time and some exciting ideas is what we need – email friendsofpsad@gmail.com. Our much valued member of the Management Committee, Marguerite Williams is leaving us at the end of term which will leave us short-handed. Many thanks, Marguerite for your time and enthusiasm, you will be sorely missed!

Thank you, to all those who responded to my email/letter about the future of the School. Please keep thoughts and ideas coming. Now it is time for another update. Since March, we have been working hard on developing the proposal for the School to become an independent charity, which we have given the working title of 'the PSAD Trust'.

We have developed a proposal for the organisation and governance of the Trust and prepared heads of terms for an agreement with Wandsworth Borough Council. (WBC) The Friends have been fortunate in being able to obtain specialist advice from a charities lawyer which was both positive and supportive. As well as being given help and advice by Trustees of Fulham Palace who have been through a similar process. The outcome has been very encouraging and we have now submitted a formal request to WBC.

I am delighted to report that, just before going to press with the newsletter we received an initial response from the Chief Executive of WBC and we are due to have a progress meeting with officers in the middle of May. More to come on this later in the term.

It's the Summer term already and the Friends Committee are fully engaged arranging our final events of the year. This newsletter is full of all the information you need to join in the School Exhibition, the Summer Party and Putney Art. We are hoping for a really good level of entries this year for both exhibitions. Once again this year's prizewinners from the School Exhibition will be automatically invited to exhibit at Putney Art in the Exchange in Putney High Street. Putney Art is a really good opportunity to sell your work while promoting the School.

Clare Frankl Bertram, Chair FPSAD

TREASURERS REPORT

The balances are c.£5,000 in our current account and c.£12,500 in the deposit account. Memberships are still dribbling in for this year, which is great as of course this is our main source of revenue. We hope to add to our coffers with Putney Art which is advertised elsewhere in the Newsletter. Last year it was slow and disappointing, so come and support it in the Exchange, and we hope very much for a better year this year!

Vicki Garthwaite, Treasurer FPSAD

FRIENDS OF PSAD NEWS

WHO WE ARE, WHAT WE DO

The Friends of Putney School of Art & Design is a registered charity run by volunteers to support and promote the art school. Friends memberships raise money to enhance the facilities in the school. Members benefit from free lectures, and priority booking for workshops and masterclasses from visiting expert speakers and tutors. The Friends also run exhibitions, parties and art and craft fairs, as well as representing student views to ENABLE. Membership of the Friends of PSAD is a great way to support the School and is only £10 for the whole academic year, starting in September.

FPSAD Committee Members:

Clare Frankl Bertram	Trustee	Chair
Alison Brooke	Trustee	
Vicki Garthwaite	Trustee	Vice Chair and Treasurer, Social Media
Mark Hayman	Trustee	Membership Secretary, Class Reps Co-ordinator
Jean McMeakin	Trustee	Newsletter Editor, Social Media
Carolyn McMillan	Trustee	Secretary
Penny Montagnon		Volunteer Organiser, Merchandising
Liz Mundle		Lectures, Workshops and Masterclasses
Sniez Torbarina		Seasonal Fair Activities
Fleur Tookey		Putney Art Co-ordinator, Merchandising
Marguerite Williams		Merchandising (to end of term)

MEMBERSHIP NEWS

Last September our Friends Membership sign-up stand in the School reception proved very successful and so the Friends Committee will be out in force again in the Autumn. We will be around from Monday 30th September to Saturday 12th October, which is a couple of weeks after the Autumn term starts.

The membership year goes from September to September so make sure you have your £10 with you or, even better, your bank details for a Standing Order.

If you are an existing member you won't have to fill out the membership form again, instead we will just require your name on a FPSAD Renewal Membership Slip and then it's just a matter of collecting your new membership card.

If you are a UK tax payer and don't already let us reclaim the GIFT AID on your £10 membership fee please think about it. It doesn't cost you anything extra and will help us enormously.

Have a successful summer term.

Mark Hayman, FPSAD Membership Secretary

FRIENDS OF PSAD NEWS

The Friends of Putney School of Art & Design Newsletter is changing and, like many other publications, we are moving from print to electronic newsletters, to save time and costs, and to make our communications to you, our members, quicker and easier.



We'd like to think that our newsletters are so wonderful and packed full of interesting and informative articles that you all keep a pristine archive of copies for posterity, but we realise that, once read, most old print copies go in the recycling bin after a while.

Over time we are planning to phase out posting hard copies of this newsletter to members and we are encouraging all members to subscribe to the electronic version of the newsletter now.

Over half of current FPSAD members now subscribe to e-news. Subscribing is easy, all you need to do is give us your e-mail address and we'll do the rest.

We'll send you an e-mail each term with the newsletter attached or ready to download, and from time to time we'll send other e-mails with news and information about events, activities, lectures, and workshops.



E-subscribers get their copy of the newsletter as soon as it's published - no more waiting days for the post to arrive!

Signing up to e-news also helps us save costs on printing, packaging and postage, and saves trees, which are vital for the health of our planet.



Posting hard copies of the newsletter and other correspondence to members three times a year costs nearly half of your membership subscription.

If you're currently receiving this newsletter in paper form through the post, please consider signing up to e-news today. Just e-mail us now: friendsofpsad@gmail.com

For those members who don't have access to a computer, or where digital accessibility is a problem, we will of course continue to send hard copies.

We know some people like a hard copy for aesthetic reasons - albeit they have access to e-mails and the internet - and we understand that, but please reconsider; the Trustees and the Committee are all volunteers and give up their time to run the Friends, including getting the newsletter printed, addressing, stamping and stuffing nearly 200 envelopes with it, and taking them to the post, every term. That time could be spent on other work this year, as its going to be busy with all the proposed changes at the School in future.

As part of our future plans we hope to be able to make back copies of the newsletter available online, so that members can access content on demand, so look out for news of this in future.

If you're already an e-subscriber, please accept our sincere thanks. If not, thanks for taking the time to consider switching to e-news. It couldn't be easier!

putneyart 2019

Putney Art pop-up selling exhibition

will take place again this year in front of Waitrose in Putney Exchange

MONDAY 24TH TO SUNDAY 30TH JUNE

Come along and support local fellow artists

We look forward to seeing you there

If you would like to take part in Putney Art, we would love to hear from you.

It's **open to all** but, with limited space, unfortunately we are not able to take everyone. We will be inviting some of the School's prize-winners to take part - prize day and party is on **Friday 7th June** - as well as tutors and some artists who are local, but not at the School.

Please e-mail for details, and if you have not exhibited before please attach a photograph of your work. We will do our best to include as many people as possible.

friendsofpsad@gmail.com

Calling all Painters, Potters, and Printers!

Please read these Terms & Conditions of entry carefully before applying

- You must be free and commit to help steward the exhibition for at least one session of two to three hours. You will be sent a timetable when we know we have space for you.
- **ARTISTS:** There is a 35% commission on works sold and an entry fee of £8 per work. Artists may submit up to three framed, ready to hang works (no clip frames) with a maximum size of 50 x 76 cms (30 x 20 ins) including the frame. Clip frames will not be hung, but unframed canvases will be hung as long as the edges are neatly finished. We do not accept giclee prints. Artists can submit up to four additional browser items at no extra cost. These must be properly mounted, labelled, and wrapped in clear plastic/cellophane. You will be contacted nearer the time to confirm all details.
- **POTTERS:** Entry fee will be £15.00 for up to 10 pieces. 35% commission will apply as above.
- You will be required to bring your work to the Art School, Oxford Road on Sunday 23rd June between 10am and 3.00pm. We cannot make exceptions.
- Your unsold work must be collected from Putney Exchange between 3.00pm and 5.00pm on Sunday 30th June. We are absolutely unable to keep work after 5 pm on that day - there is nowhere to store it.
- The Hanging Committee's decision on what will be hung, and in which position, is final. At least one work per artist will be hung straight away, with the aim to get them all hung by the end of the week. We aim to exhibit all the ceramics.
- All work is entered entirely at the owner's risk. We will take all reasonable care but cannot accept any liability whatsoever for damage or loss. Please insure your own work if you're concerned.

FRIENDS EVENTS: SPRING LECTURE

THE UNCOMFORTABLE MUSEUM

Lecture by Alice Proctor

A lively and enthusiastic speaker, Alice engaged us with her project to question how we are informed by the objects we see displayed in Museums. She assured us her talk was not about repatriation, but about reflection on the true stories behind collections.

She launched pretty directly into the example of Captain Cook's discovery of Australia and the manner in which artefacts from that trip were appropriated. A native shield is labelled as being given to Cook when in fact, Alice proposed, it was probably taken as a trophy, the owner having been killed by Cook and his men on arrival in the lands. This throws into question the way in which we see the exploits of our revered explorers and the Imperial past which is widely celebrated in our museums and collections.



Alice then focused on various artists who have made the provenance of objects central to their art. Fred Wilson, an African, Native American artist was invited to create an exhibition in Baltimore, '*Mining the Museum*', the idea being to give exposure to the extensive collection held by the Maryland Historical Society. One of his exhibits, shown to us in a slide, depicted 19th Century silver repousse vessels alongside iron slave shackles, and was an invitation to think more deeply about the conditions under which those trappings of Colonial life were made. Surprisingly, I found that this exhibition was held in 1992.

More recently, an exhibition at The Fitzwilliam in Cambridge in 2018, '*Parian Unpacked*', sought to express similar sentiments. The artist Matt Smith displayed his Parian, marble-like figurines in packing boxes against a background of apparently traditional country house wallpaper. Looking more closely one could see that the images on the paper were in fact cartoons of violence and thuggery performed on the indigenous people. It was often their wealth and labour which was exploited to build many of the collections and grand country houses.

It has always been the place of artists to question and kindle controversy but now it may also be the institutions themselves that can invite dialogue over how they display their collections. Uncomfortable indeed to have to look more deeply into our Colonial past, and very topical when so much of the History we have cleaved to is under scrutiny today. Much of what Alice was drawing attention to was evident at the '*Oceania*' exhibition at the RA, and particularly well demonstrated by the fascinating slow motion video which many will remember depicting the effects of the arrival of Western 'Civilisation'.

Understandably perhaps, Alice finds resistance from curators to amend how things are presented and labelled. Museum directors must now find their role as piggy in the middle very compromising. Benefactors will be less inclined to donate their collections if uncomfortable truths about their procurement are uncovered. But this is a period of transparency and questions of how far galleries and art institutions go to be conscientious in their decisions are becoming ever more topical.

Alice's talk was followed by some lively discussion and the topic clearly stimulated thoughts about the role Museums play in education, and how we see the objects in them. For my own education I found taking a look at the websites of Fred Wilson and Matt Smith fascinating. Their videos explaining their work is articulate and thought-provoking and I'm grateful to Alice for introducing them to me as well as for a most entertaining evening.

Review by Fleur Tookey

FRIENDS EVENTS: SPRING WORKSHOPS

INTRODUCTION TO PHOTOPOLYMER ETCHING with Bea Haines

I am not a printer and have never been attracted to the etching process with chemicals but Bea Haines' workshop caught my eye. Probably because of the word 'photo'. Ah! No drawing onto an etching plate. I'll give it a go! I later learned that no chemicals are involved, an added benefit.



Armed with a couple of my charcoal drawings copied onto acetate as instructed in pre-course notes, I was somewhat alarmed by her introduction that Photopolymer Gravure or 'Photo Etching' is "*probably the most difficult of the etching processes*". However, by the end of the day most of us had produced some very acceptable prints and I for one was hooked!

Photo etching allows you to transfer a photograph (or drawing) onto an etching plate which can then be printed many times in different colours with etching inks. This photographic element is not possible using normal etching techniques (such as hard or soft ground etching).



Photo etchings can be combined with many print techniques, including *Chine Collé* and *a la poupée*. The image will have a more inky, painterly feel than a printed photograph. Either way, the result often has a more 'artistic' effect than digital printing, printed onto high quality art paper with an emboss around the image and rich colours created by using etching inks.

The down side of photo etching (and indeed etching in general) is that you need access to an etching press and a light box unit in order to create your prints. If you are one of those who have missed out on signing up to a PSAD etching course, most good universities and colleges have etching presses and there are also some open access workshops that you can use (once you have had an induction).

These include:

Artichoke Print Workshop <https://www.artichokeprintworkshop.co.uk/>

East London Printmakers <https://www.eastlondonprintmakers.co.uk/>

Thames Side Print Studio <https://www.thames-sidestudios.co.uk/print-studios>

Hopefully there will be more PSAD short course workshops. If so, make sure you have your image ready on the acetate otherwise valuable printing and experimenting time is wasted.

Review by Lindsey Whitelaw



FRIENDS EVENTS: SPRING WORKSHOPS

EXPERIMENTAL COLLAGE with Alison Pullen

Alison opened her workshop by describing her influences. She was introduced to collage in childhood and developed her techniques during her training at Kingston, Norwich, Paris and the Royal College.

She shared her sketch books with us, showing various stages and aspects of her work, including techniques she has tried such as etching onto carbon paper, using water colour, oil paint, and even biro. We were awed by a recent large interior depicting Leeds Castle, which managed to be structured and yet semi abstract with a level of detail and vitality I had no idea was possible with collage. Alison always works in situ, never from photographs, which means she has to work quickly, but she believes it gives her work a fresh and vibrant aspect.

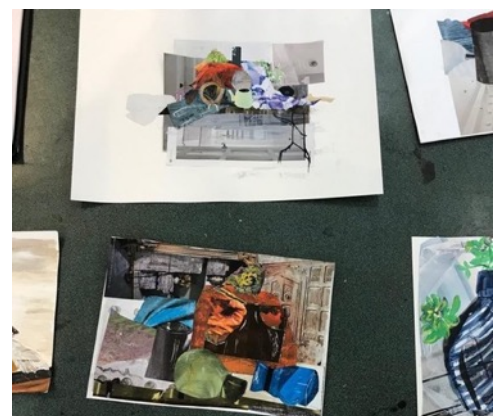
As a warm up, we began with some quick sketches of leaves in pencil or charcoal which we had to complete without looking at the page, a challenge that produced some surprisingly good results. Alison then demonstrated our next challenge which was to paint the leaves using white paint and black paper, the twist being that we were to paint the negative space around the leaves. Even for those of us who had done something like this before it was tricky to do. It certainly gave us food for thought. After lunch it was time to try our hands at collage, working from a large still life Alison had created in the centre of the room.



Alison explained her methodology when creating her paintings. First, she will spend a few minutes drawing a quick compositional sketch and then start to consider light and dark areas of the composition. Using fresh paper, she will then apply magazine papers to start to create structure in bold blocks of colour.



She finds it helpful to look at the magazine pages in an abstract way, holding them upside down to help focus on colour and shape. Alison then showed us some of the techniques she uses, such as scraping the page with a frighteningly sharp scalpel to give an etched effect or using white spirit or Zest-it to blur or remove colour from the page and re-apply it elsewhere. She then uses acrylic paint to add or change colours and acrylic washes to tone areas. Alison finishes her pieces by dry mounting to flatten and help preserve them.



We began our sketches with Alison encouraging us to start thinking about how we could use some of the different methods she demonstrated to capture the different textures, shapes and tones in the still life.

FRIENDS EVENTS: SPRING WORKSHOPS

EXPERIMENTAL COLLAGE with Alison Pullen

(continued)



Alison uses World of Interiors magazine but we brought a wide selection to use. Using a scalpel to cut accurate shapes required a fair degree of manual dexterity and keen observation. The exercise creating negative space paintings became more relevant as the importance of accurate recording of objects and the space around them became apparent. Our mantra became look and keep looking!

Alison suggested that there were three important things for us to remember; to know when you are finished, not to over work things, and to know when you make a good mark. Before we knew it, it was time to clear up. We just had time to look at each other's work which was interesting and varied. I certainly left feeling I had learnt so much but had so much still to learn.

Review by Janice Cameron

UNCONVENTIONAL SLIP DECORATION AND FORM with John Higgins

John Higgins workshop on slip decoration echoed his 'anything goes' approach to making pots, where there are no prescribed forms or predetermined outcomes.

We began by making random markings in wet slabs of stoneware clay using a variety of tools and brushes. Powered clay was gently rubbed into the slabs which were then stretched and, as they began to dry, patterns started to emerge.

Any tears or holes that appear in the stretching process are later simply incorporated into the final form. The dry clay powder also causes a kind of crackling to appear on the surface.

John showed us how this process can also work by applying liquid slips. Similarly, lining paper can be painted with slip. Patterns or markings are added once the paper has dried and the sheet can then be placed onto the slab to transfer the design.

The workshop was great fun. We all worked to create a completed form and it was fascinating to see the variety of individual works that emerged.

Review by Nicole Hollingworth



SCHOOL SUMMER SHOW

Putney School of Art and Design Annual Student Summer Exhibition 2019

Monday 3rd June to Friday 21st June

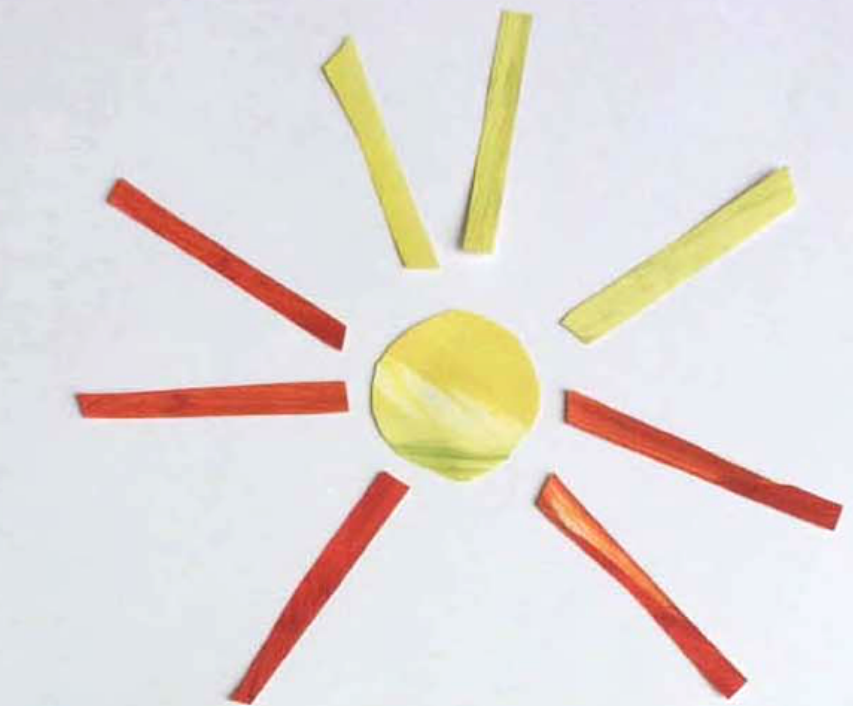
All students are invited to enter work into our Annual Student Summer Exhibition. Please note the details below. You can pick up a free entry form from the school reception or request one by emailing psad@enablelc.org



Criteria for Submission

1. Work must not be larger than A1
2. Students are limited to **one submission each**
3. Work must be framed; ready to hang
4. Work must be clearly labelled with name, title, category entered and price (if applicable). The label should be strung and visible from the front.
5. Work will not be accepted at any other time than the submission days/ times given above.
6. You may borrow a frame from the school by arranging this in advance - but we have a limited number.
7. Work can be on sale with 20% commission to PSAD.

- Submission times are;
Tuesday 21st May 9.30 - 1.30pm
Friday 24th May 1pm - 5pm.
- Party and Prizegiving Friday 7th June 7pm - 9pm
- Collection on Friday 21st June all day and 10am - 12 noon Saturday 22nd June
- Prizes will be awarded for the following categories:
 - Digital Photography / Design
 - Screenprinting
 - Etching
 - Lithography / Lino / Experimental Print
 - Illustration / Drawing / Botanical
 - Life Drawing
 - Portrait (Drawing or Painting)
 - Watercolour / Gouache Painting
 - Oil / Acrylic Painting
 - Pastels
 - Mixed Media
 - Pottery Handbuilding
 - Pottery Throwing
 - Ceramic Sculpture
 - Elizabeth Bull prize (Ceramic Work)
 - 7-13 years
 - 14 - 17 years *New*



PSAD

SUMMER

PARTY

PUTNEY SCHOOL OF ART AND DESIGN INVITES ALL STUDENTS
AND TUTORS TO THE SUMMER PARTY AND PRIZE GIVING

FRIDAY 7 JUNE 2019, 7 - 9 PM

PUTNEY SCHOOL OF ART AND DESIGN
OXFORD ROAD SW15 2LQ

HERITAGE CORNER: THE FRIENDS OF PSAD

The story of the Friends of the School began in 1999 when the much-loved Putney School of Art & Design was in danger of imminent closure due to planned redevelopment.

Several students and tutors realised the consequences and quickly gathered an action group with the sole purpose to delay and eventually stop the closure. The first, core team comprised architect Rob Dark (chair), designer Margaret Knott and tutor Eric Larmont, assisted by Ray Barker, Jenny Alexander, Morrie Tabak, Michael Hatfield, Michael Holmes, and many other volunteers.

Through sheer determination, hard work and pure activism - press releases were going out continuously, posters were designed, weekly meetings held - the ultimate goal was finally achieved, in persuading Wandsworth Borough Council that the School had scope to increase the intake and to expand, and the School was saved.

The 'Friends of PSAD' charity was formed shortly after, with the aim of continuing to support the School and safeguard its future.

Soon after, the team was joined by Alison Brooke, Victoria Garthwaite, Jenny Kershaw, and Janet Mays. The committee has been expanding and evolving ever since. Rob and Margaret are still on board in the role of President and Vice President, whilst architect Clare Frankl Bertram is the Chair.



friends of
Putney
School
of Art &
Design

Fund the Future

*Campaign materials to raise funds for the roof extension
to house the new Studio 3 and cafe*



The most important campaigns included establishing and expanding the Library, which was then followed by the major undertaking in 2009 - the building of the new Studio 3 and communal areas in the roof extension.

The Friends relentlessly worked on fundraising, which included many events, culminating in the Art Auction, which raised £30,380! The artworks sold included known and unknown artist who contributed their pieces in an impressive showcase of togetherness! Altogether, the Friends raised £60,000 for the roof extension, an impressive fundraising feat.

HERITAGE CORNER: THE FRIENDS OF PSAD



*Construction work for the roof in April 2009
Now the 10-year anniversary*



*Drawing by Margaret Knott illustrating the
proposal for the roof extension*

The Friends have purposefully organised to enhance the scope and activities of the School, by raising funds and developing activities that have expanded the School and helped to raise its profile in the local community.

This has contributed to the School increasing its intake by more than double what it was when threatened with closure, and has also supported streamlining the organisation and boosting its sustainability for the future.

The committee works closely with the School and the Head of School by regularly organising events and fundraising activities for the benefit of all students and Friends members.

The basis of the Friends approach has always been to support the view that it is better for the School to remain part of community provision for adult education, and to resist any attempt to privatise it.

The committee continues to passionately advocate for the School as a centre of excellence for education in art and design, and protecting the School as a resource for the local community. Just as its founder and patron Sir William Lancaster had in mind when he founded the School back in 1883. But more about that in the next Newsletter!

By Sniez Torbarina

CLASS REPRESENTATIVES

A big thank you to all Class/Student Reps. I am sure you'll agree it wasn't an onerous task. Forwarding a few emails each term - a real doddle. If you are in a class that has no Rep please volunteer or if you are a Rep keep up the good work and spread the word to others.

If you have any thoughts on how to make the system of Class Reps better your feedback is always welcome at friendsofpsad@gmail.com or just slip a note into the white Friends box (with the red padlock) at reception.

Mark Hayman, FPSAD Class Reps Coordinator

WANDSWORTH / PUTNEY ARTISTS OPEN HOUSE

The annual Open House art event across Wandsworth borough is once again due to take place on the first two full weekends of October.

The first Open House took place over 15 years ago and was the brain child of the Friends of PSAD who launched the event in Putney, with the backing of the Art School and Wandsworth Council. PSAD remains very much involved both as a venue, and a keen supporter of Open House. Over the years, the event has developed into a borough-wide celebration of local artists much enjoyed by local art enthusiasts.



© M KNOTT

It is open to all, and new artists wishing to take part can contact the Arts Office at the council/Enable through their website www.wandsworthart.com. Alternatively, the Arts Office can be reached on 020 3959 0020.

For Open House to be the best possible local event for the artists participating, we also need as much help with small tasks that we can get. We are looking for volunteers to help over the summer and in the autumn. If you think you can be of assistance, please do come forward and contact either Jenny Alexander jenny.alexander@btinternet.com or Margaret Knott: m.knott123@btinternet.com



Raise funds for us every
time you shop online

FREE FUNDRAISING

Please help support Friends of Putney School of Art & Design by shopping online. Use easyfundraising to shop with over 3,600 retailers including Amazon, Argos, John Lewis, ASOS, Booking.com, eBay, Boden, and M&S.

Every time you shop, you'll raise a free donation for Friends of Putney School of Art & Design every time, it's that easy!

Find out more:

www.easyfundraising.org.uk/causes/putneyschoolofart



jackdaw jewellery

specials made to order
alterations and repairs
pennymontagnon@gmail.com
tel: 07913 851635



Shop with over 3,300 online stores



£20 Million raised 1.2 Million users 100,000 causes